

Redistributing deaths by ill-defined and unspecified causes on cancer mortality in Brazil

Alessandro Bigoni^I , Amanda Ramos da Cunha^{II} , José Leopoldo Ferreira Antunes^I 

^I Universidade de São Paulo. Faculdade de Saúde Pública. São Paulo, SP, Brasil

^{II} Harvard T.H. Chan School of Public Health. Fulbright Fellow. Boston, MA, United States of America

^{III} Universidade Federal do Rio Grande do Sul. Faculdade de Odontologia. Porto Alegre, RS, Brasil

ABSTRACT

OBJECTIVE: to discuss the impact four different redistribution strategies have on the quantitative and temporal trends of cancer mortality assessment in Brazil.

METHODOLOGY: This study used anonymized and georeferenced data provided by the Brazilian Ministry of Health (BMoH). Four different approaches were used to conduct the redistribution of ill-defined deaths and garbage codes. Age-standardized mortality rates used the world population as reference. Prais-Winsten autoregression allowed the calculation of region, sex, and cancer type trends.

RESULTS: Death rates increased considerably in all regions after redistribution. Overall, Elisabeth B. França's and the World Health Organization methods had a milder impact on trends and rate magnitudes when compared to the Global Burden of Disease (GBD) 2010 method. This study also observed that, when the BMoH dealt with the problem of redistributing ill-defined deaths, results were similar to those obtained by the GBD method. The redistribution methods also influenced the assessment of trends; however, differences were less pronounced.

CONCLUSIONS: Since developing a comparative gold standard is impossible, matching global techniques to local realities may be an alternative for methodological selection. In our study, the compatibility of the findings suggests how valid the GBD method is to the Brazilian context. However, caution is needed. Future studies should assess the impact of these methods as applied to the redistribution of deaths to type-specific neoplasms.

DESCRIPTORS: Neoplasms, mortality. Data Accuracy. Vital Statistics. Cause of Death.

Correspondence:

Alessandro Bigoni
Av. Dr. Arnaldo, 715
01246-904 São Paulo, SP, Brasil
Email: alebigoni@usp.br

Received: Nov 13, 2020

Approved: Feb 25, 2021

How to cite: Bigoni A, da Cunha AR, Antunes JLF. Redistributing deaths by ill-defined and unspecified causes on cancer mortality in Brazil. Rev Saude Publica. 2021;55:106. <https://doi.org/10.11606/s1518-8787.2021055003319>

Copyright: This is an open-access article distributed under the terms of the Creative Commons Attribution License, which permits unrestricted use, distribution, and reproduction in any medium, provided that the original author and source are credited.



INTRODUCTION

Preventive and therapeutic interventions require constant epidemiological surveillance. Monitoring the magnitude and variation of cancer mortality over time and space allows the evaluation of access to and quality of health services, as well as recognizing risk factors, planning health programs, and setting research priorities^{1,2} Cancer mortality surveillance is even more needed in the absence of accurate and comprehensive incidence data, common in many countries³.

Mortality data reliability is a critical aspect of epidemiological studies on cancer. The under-registration of deaths (low coverage of the information system), a high proportion of deaths classified as due to unspecified causes⁴, and the inadequate reporting of immediate or mediate conditions as the underlying cause of death (usually referred to as “garbage codes”)⁵ are the main problems affecting the reliability of mortality data. Both the low coverage and a high proportion of garbage codes affect the Mortality Information System in Brazil⁶.

The quality of mortality data in Brazil increased in recent decades⁷, but significant problems remain⁷. The coverage of the country’s information system is heterogeneous across the states. Economically developed regions, such as the South and Southeast, have coverages comparable to that of richer countries, increasing the system’s overall reliability at the national level. However, in the more impoverished Northeast and North regions, several states reported less than 80% of their deaths to the country’s information system during the 1990s and 2000s. A recent global health study on cancer mortality in high- and middle-income countries excluded Brazilian data due to the insufficient coverage of the mortality information system during this period³.

The Global Burden of Disease 2016 study rates Brazil four out of five stars, indicating a 65% to 85% overall percentage of well-certified deaths – a stark contrast to the three stars (35%~65%) the country’s Northern and Northeastern regions received⁸.

Concerns about the information system’s limitations are recurrent in epidemiological studies on mortality, which includes cancer^{5,9,10}. Several statistical techniques to correct this problem were reported, resulting in a variety of methods for the same purpose^{11–13}. Primary global information sources, such as the World Health Organization (WHO) and the Global Burden of Disease, applied these methods, and performed different corrections^{2,14}. These techniques consisted of redistributing deaths by unspecified causes among the underlying causes of death (or specific types and subtypes of cancer), according to different conceptual frameworks and methodological complexity. However, their differential impact on the results has been little explored. This study aims to discuss the impact on the magnitude and temporal mortality trends of four different redistribution strategies that have been used to assess cancer mortality in Brazil.

METHODS

Data

This study gathered data freely provided by the mortality information system in the Brazilian Ministry of Health website. The study period starts in 1996, when the information system adopted the 10th revision of the International Classification of Diseases (ICD-10)¹⁵. The study period ended in 2017, which is the most recent year with information already available.

Death certificates provide information on the deceased’s sex, age, the underlying cause of death, and place of residence. The Brazilian Institute of Geography and Statistics supplied the number of inhabitants for each town, sex, and age groups. The demographic information relates to the 2000 and 2010 censuses. Estimates were calculated for the remaining years using the exponential growth rate based on two points in time: $R = \ln(Pf/Pi)/Ny$; where

R is the growth rate for a given municipality, sex and age group, P_l and P_f are the last and first measurements in the available period, respectively, and N_y is the period range in years. This estimation technique allows for smoother population estimates reducing fluctuations in mortality trends.

To reduce data granularity, we assigned each town to its respective macroregion. Macroregions are the broadest regional divisions in the country: North, Northeast, Southeast, South, and Center-West. We used the built-in *icd10* Stata command to generate a dummy variable which signaled the deaths by cancer. When selecting the ICD-10 codes used as targets, we used the list provided by the Global Burden of Disease (GBD) 2010 study (Box)¹⁴. The data were subsequently aggregated, resulting in the total number of cancer deaths by macroregion, sex, and age group.

Redistribution Methods

The GBD 2010 Study used the method proposed in Naghavi et al 2010 to identify garbage codes in death certificates⁵. Garbage codes are codes not considered useful to the analysis of underlying causes of death and should, thus, be redistributed to enhance the validity of the analysis. The Global Burden of Disease 2017 Study expanded the number of ICD-10 codes identified as garbage codes¹⁶. Each garbage code was assigned to its respective group, as proposed in the GBD 2010. The probability of a certain cause of death to be misclassified as a certain garbage code varies depending on the cause of death. The GBD 2010 estimated the proportion of each death by a garbage code that should be assigned to each specific cause of death by applying a method proposed by Ahern et al 2011¹⁷. The following formula allows calculating the total amount of deaths attributable to a specific underlying cause:

$$NDc + \sum NDg_i * C_i$$

Where NDc is the number of deaths whose cause was certified as being cancer, i is the garbage code group, NDg_i is the total number of deaths by a garbage-code group, and C is the coefficient proportion taken from¹⁴.

In 2014, França et al. (EF method) proposed a different method of redistribution, which focused solely on the 18th chapter of ICD-10⁹. The study investigated the misclassified causes of death and proposed coefficients to guide their redistribution. They built on the WHO's recommendations (WHO method) for death redistribution, found in the 18th chapter which describes the proportion of deaths in the remaining chapters of the ICD-10¹⁸, according to the following formula:

$$NDR * \left(\frac{NDc}{AD - NDR - NE} \right)$$

Where NDc is the certified number of deaths by cancer, NDR is the number of deaths found in ICD-10's 18th chapter (R00-R99), AD is the total number of deaths and NE is the total number of deaths by external causes. The EF method followed the assumption (verified in a small sample of deaths that underwent verbal autopsy) that cancer deaths have a lower chance of being misclassified than deaths by other diseases, and redistributed only half of the R00-R99 neoplasm deaths following the proportion proposed in the WHO method.

Box. Target codes for all cancers according to the ICD-10.

Targets
C00-C139, C15-C259, C30-C349, C37-C388, C40-C419, C43-C459, C47-C549, C56-C578, C58-C580, C60-C638, C64-C679, C680-C688, C69-C758, C81-C866, C88-C969, D001-D002, D010-D013, D020-D023, D03-D069, D070-D072, D074-D075, D090, D092-D093, D098, D100-D107, D11-D129, D130-D137, D140-D143, D15-D169, D22-D249, D260-D279, D280-D281, D287, D290-D298, D300-D308, D31-D36, D361-D367, D371-D375, D380-D385, D391-D392, D398, D400-D408, D410-D418, D42-D439, D440-D448, D45-D479, D480-D486, D492-D494, D496, K620-K621, K635, N60-N609, N840-N841, N87-N879.

The Brazilian Ministry of Health also developed a method (BMoH method) to correct mortality data⁶. They calculated the correction coefficients by taking into account data from verbal autopsies and medical record reviews performed in the country. Although Ministry of Health has not fully disclosed their data, they provided the total values of redistributed deaths by neoplasms by macro-region, age group, and sex for the years 2000 to 2013. Within these four scenarios, we also proportionally redistributed deaths of unknown sex and age according to region and year of death.

Analysis

We calculated age-standardized mortality rates (ASMR) for the four scenarios, in each year, macro-region, and sex. The standardization of rates used the reference population defined by the WHO¹⁹. The assessment of trends used the Prais-Winsten method for generalized linear regression, with log-transformed ASMRs as the outcome variable, and year of death as the covariate. This method takes into consideration the first-order serial autocorrelation that affects timely ordered measurements of social processes. The resulted $\beta 1$ and its confidence intervals ($\beta 1_{lower}$ and $\beta 1_{upper}$) were used to calculate the annual percentage change (APC) using the formula described by Antunes and Waldman: $APC\% = (-1 + 10^{\beta 1}) * 100$. Similarly, the confidence intervals of the APC can be calculated by substituting β by $\beta 1_{lower}$ and $\beta 1_{upper}$ in the same formula²⁰. The trend is increasing if the resulting APC and its confidence interval are positive; the trend is decreasing when they are negative; the trend is stationary when the confidence interval includes the zero.

The assessment of the impact of redistributing deaths used three measurements. The first two were the initial and final magnitude of mortality, where the initial magnitude is the average death rates for the first three years of the study period and the final magnitude is the average death rates for the last three years. The third measurement was the APC, as defined above, which refers to the trend of mortality for each scenario. Both the death rates and the APC were compared in terms of the rate ratios, considering figures related to certified death rates as the reference and figures related to each redistribution method as the comparison category.

The steps detailed above are reproducible through the user-written Stata command *charon*, which can be downloaded to Stata using the command *ssc install charon*. We provided the dataset used for this study in Additional file 2. All the steps of this analysis used Stata 15.1 (College Station, Texas, 2019).

RESULTS

Cancer mortality was on the increase in the more impoverished North and Northeast Brazilian regions, whereas rates declined in the wealthier South and Southeast regions (Figure). Table 1 depicts cancer mortality across the regions in the initial and final years of the monitoring, as assessed by the different methods of redistribution. It also depicts differences in trends over the study period.

The South region had the highest rates in all scenarios, and on all periods, while the Northeast had the lowest. In the Center-West region, certified death rates were on the increase; the same was observed after redistribution of deaths by the EF method. However, the trend was stationary after redistribution by the WHO method, and it was decreasing when redistribution of deaths used the methods proposed by the GBD study and the Brazilian Ministry of Health (Table 1). Overall, redistributing the deaths by ill-defined causes resulted in lower figures of APC than the mortality exclusively referred to cancer deaths with certified underlying causes, which suggests that the mortality information system may have improved over the study period.

In the first years of the trend, the impact of the EF redistribution was higher in the North region, where the rates suffered a 22% increase compared to certified death rates, and lower in the South, where the increase was only of 5%. Expectedly, the WHO redistributed scenario

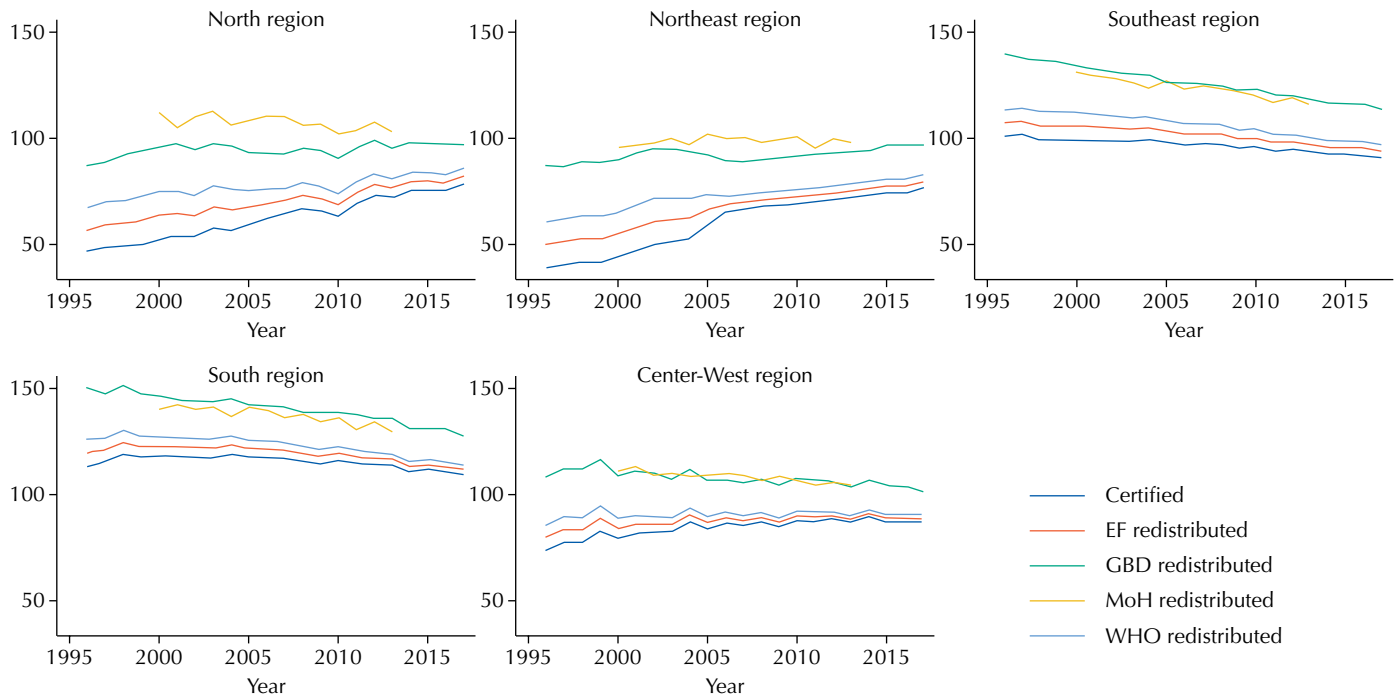


Figure. Time series of cancer mortality in Brazil, 1996–2017, by macroregions. Certified, EF redistributed, and GBD redistributed death rates as adjusted for age and gender.

Table 1. Certified and redistributed cancer mortality in Brazil, 1996–2017. Age and gender-adjusted rates (per 100,000 inhabitants) and Annual Percentage Change by macroregions.

	North	Northeast	Southeast	South	Center-West
Initial magnitude					
Certified	48.32	40.80	100.91	116.40	76.93
EF redistributed	58.94	51.63	107.07	122.15	82.82
WHO redistributed	69.55	62.47	113.23	127.91	88.71
GBD redistributed	89.56	87.83	137.81	149.87	111.23
BMoH redistributed ^a	108.94	96.88	129.42	141.18	116.50
Final magnitude					
Certified	76.77	75.35	92.13	110.99	87.79
EF redistributed	80.54	78.47	95.14	113.27	89.31
WHO redistributed	84.31	81.59	98.15	115.55	90.82
GBD redistributed	97.20	96.77	115.37	130.12	103.64
BMoH redistributed ^a	104.85	97.75	117.12	131.72	105.43
APC					
Certified	2.51 [2.30; 2.72] ↑	3.27 [2.30; 4.25] ↑	-0.48 [-0.54; -0.41] ↓	-0.24 [-0.44; -0.03] ↓	0.68 [0.46; 0.90] ↑
EF redistributed	1.62 [1.46; 1.78] ↑	2.23 [1.70; 2.76] ↑	-0.64 [-0.71; -0.57] ↓	-0.38 [-0.57; -0.19] ↓	0.37 [0.23; 0.50] ↑
WHO redistributed	0.92 [0.72; 1.12] ↑	1.40 [1.09; 1.71] ↑	-0.78 [-0.87; -0.69] ↓	-0.52 [-0.70; -0.34] ↓	0.09 [-0.01; 0.19] ↔
GBD redistributed	0.32 [0.05; 0.60] ↑	0.43 [0.10; 0.76] ↑	-0.93 [-0.96; -0.90] ↓	-0.71 [-0.81; -0.62] ↓	-0.40 [-0.51; -0.29] ↓
BMoH redistributed ^a	-0.43 [-0.75; -0.11] ↓	0.09 [-0.17; 0.35] ↔	-0.84 [-0.98; -0.69] ↓	-0.60 [-0.72; -0.48] ↓	-0.49 [-0.60; -0.38] ↓

^a It refers to the period from 2000 to 2013.

↑ Increasing trend; ↓ Decreasing trend; ↔ Stationary trend; EF: redistribution method proposed by França et al. (2014)⁹; GBD: redistribution method proposed by Lozano et al.¹⁴ (GBD 2010); APC: annual percentage change.

yielded a rate two times higher than the EF scenario. The GBD redistribution method had a higher impact in the Northeast and a lower impact in the South, corresponding to an increase of, respectively, 115% and 29% in the rates (Table 2).

Table 2. Cancer mortality in Brazil, 1996–2017, by macroregions. Impact of redistributing deaths by unspecified and ill-defined causes.

	North	Northeast	Southeast	South	Center-West
RR of initial magnitude					
Certified	1.00	1.00	1.00	1.00	1.00
EF redistributed	1.22	1.27	1.06	1.05	1.08
WHO redistributed	1.44	1.53	1.12	1.10	1.15
GBD redistributed	1.85	2.15	1.37	1.29	1.45
BMoH redistributed ^a	2.03	2.04	1.30	1.19	1.37
RR of final magnitude					
Certified	1.00	1.00	1.00	1.00	1.00
EF redistributed	1.05	1.04	1.03	1.02	1.02
WHO redistributed	1.10	1.08	1.07	1.04	1.03
GBD redistributed	1.27	1.28	1.25	1.17	1.18
BMoH redistributed ^a	1.72	1.61	1.27	1.18	1.27
APC of RR of all years					
EF redistributed	-0.77 [-0.97; -0.57] ↓	-1.02 [-1.50; -0.54] ↓	-0.14 [-0.18; -0.09] ↓	-0.14 [-0.16; -0.12] ↓	-0.29 [-0.41; -0.17] ↓
WHO redistributed	-1.38 [-1.72; -1.03] ↓	-1.80 [-2.64; -0.95] ↓	-0.26 [-0.35; -0.17] ↓	-0.27 [-0.32; -0.23] ↓	-0.55 [-0.78; -0.32] ↓
GBD redistributed	-2.07 [-2.45; -1.68] ↓	-2.73 [-3.83; -1.61] ↓	-0.46 [-0.54; -0.39] ↓	-0.49 [-0.64; -0.35] ↓	-1.07 [-1.37; -0.77] ↓
BMoH redistributed ^a	-2.89 [-3.17; -2.61] ↓	-3.53 [-4.60; -2.44] ↓	-0.39 [-0.54; -0.23] ↓	-0.28 [-0.39; -0.17] ↓	-1.13 [-1.40; -0.85] ↓

^a It refers to the period from 2000 to 2013.

EF: distribution method proposed by França et al.⁹; GBD: distribution method proposed by Lozano et al.¹⁴ (GBD 2010); APC: average percentage change.

The impact of the distributions was lower during the last years of the trend. The EF redistribution method added no more than 4% in all regions, while the GBD redistribution method had its highest impact in the Northeast (a 28% increase in rates) and its lowest impact in the South (a 17% increase in rates). Table 2 depicts the annual percentage change of rate ratios comparing redistributed and certified death rates. The rate ratios for all redistribution methods consistently decreased in the five regions, which also suggests that deaths by unspecified causes and garbage codes shrunk and fewer cases had to be redistributed over the years.

DISCUSSION

This study assessed the impact of different methods of redistributing deaths by ill-defined causes on cancer mortality. Death rates increased considerably in all regions after performing the redistribution. Overall, the EF and WHO methods had a milder impact on trends and magnitudes of rates when compared to the method used in the GBD study. This study also observed that when the Brazilian Ministry of Health dealt with the problem of redistributing ill-defined deaths, the results were similar to those obtained by the GBD method. The redistribution methods also influenced the assessment of trends; however, differences in the annual percent change were less pronounced. These are the main results reported here.

To our knowledge, this is the first study systematically assessing the impact of redistribution methods on cancer mortality in Brazil. Nevertheless, a previous study on cancer mortality in Brazilian state capitals made a brief discussion about the importance of correcting the estimates by the WHO method and offered a graphic display of the differences obtained at the country-level¹¹. In addition to considering the whole country (not only the state capitals), this study included several methods of redistribution, assessed differences in magnitude and trends across all regions, and concluded that the direct appraisal of certified mortality could lead to a severe underestimation of cancer mortality.

Differences in the impact of the methods reflect specific features of the methods that attempt to deal with the low-quality of death notification. The GBD study relied on constant (i.e., not dependent on age) coefficients to redistribute deaths by ill-defined causes. The EF and WHO methods, on the other hand, used the proportion of deaths with certified causes (which varies across the different age groups) to redistribute ill-defined deaths.

The methods assessed here also differ in the selection of cases to redistribution. The EF and WHO methods exclusively redistribute deaths whose certified underlying cause was ill-defined or unknown, explicitly referring to the 18th chapter of ICD-10. The GBD study expanded the selection criteria by applying the concept of “garbage codes”⁵ to other ICD-10 chapters, mainly referring to immediate and intermediate causes of death, which should not have been selected as the underlying cause. The BMoH method gave priority to correcting the sub-notification of deaths. These methodologic characteristics may have contributed to the differential impact of the redistribution, as compared with the certified mortality, and the higher increment in magnitude resulting from the GBD and BMoH methods.

The impact of the methods also varies according to age. Older age groups have a higher proportion of deaths by ill-defined causes^{7,21}. Therefore, they also have a higher input of redistributed deaths and are susceptible to the inaccuracy that may be inherent in the methods. Thus, it is possible that using constant coefficients to redistribute deaths by garbage codes overestimates mortality for the age groups with a high proportion of adequate cause-of-death certification, and, vice-versa, underestimates it for the older age groups. This argument stands for the need to be careful when estimating cancer mortality for specific age groups.

The visual inspection of the series suggests that the impact of all redistribution methods on cancer mortality has decreased over time. This observation may be due to an improvement in the quality of mortality data, characterized by a reduction in the deaths certified as due to ill-defined causes and garbage codes. This finding is consistent with the conclusions in Mikkelsen et al. 2015, who applied a composite index to assess vital statistics in Brazil from 1980 to 2002. They concluded that the country’s information systems had consistently progressed²². Advances in the quality of civil registration in Brazil had already been reported by Szawarcwald, who highlighted, however, the persistence of significant regional discrepancies in data quality²³.

The GBD study is an ongoing example of continuous effort in improving the assessment of mortality. Its proponents have modified their method of redistribution since its first publication in 1996²⁴. The publication of the method used in the GBD study, including the coefficients for redistributing deaths by ill-defined causes, helped to disseminate its application, due to its reproducibility (GBD 2010)¹⁴. Subsequently, however, the GBD study updated its method to a more sophisticated modeling, which required complex algorithms, and information not made available by their proponents (GBD 2017)¹. This difficulty made us apply, in this assessment, the method published by the GBD 2010, which is the main limitation of this study.

The statistical monitoring of cancer mortality is unquestionably relevant to assess population health status and plan health programs and interventions. The quality of the information system has motivated several efforts in public health. These efforts range from the development of advanced methodologies for evaluating the performance of information systems^{22,25,26}, to international investments for the direct qualification of registrants^{27–29}. However, the global reality remains far from the ideal, especially in poorer countries²¹. Setel et al 2007. interpreted the persistent failure over the last decades in establishing and maintaining civil registration systems and ensuring that the causes of death are known with precision worldwide as being a “scandal of invisibility”³⁰. Thus, the development and research on indirect methods for correcting of correction methods cause-of-death statistics remain crucial.

Given the impossibility of developing a gold standard method for comparison (which would involve investigating the underlying cause of death for each ill-defined case in a given region), the matching of global techniques with those that consider the local reality may be

an alternative for the methodology selection. In the present study, the compatibility of the findings obtained by the GBD and BMoH methods suggests the validity of the first concerning the Brazilian context. However, caution is needed in this interpretation, because this study only redistributed ill-defined deaths for all cancers. Future studies should assess the impact of these methods as applied to the redistribution of deaths to type-specific neoplasms.

REFERENCES

1. Global Burden of Disease Cancer Collaboration. Global, regional, and national cancer incidence, mortality, years lived with disability, and disability-adjusted life-years for 32 cancer groups, 1990 to 2015: a systematic analysis for the Global Burden of Disease Study. *JAMA Oncol.* 2017;3(4):524-48. <https://doi.org/10.1001/jamaoncol.2016.5688>
2. World Health Organization, Department of Information, Evidence and Research. WHO methods and data sources for country-level causes of death 2000-2016. Geneva (CH); WHO; 2018. (Global Health Estimates Technical Paper WHO/HIS/IER/GHE/2018.30).
3. Maruthappu M, Watkins J, Noor AM, Williams CW, Ali R, Sullivan R, et al. Economic downturns, universal health coverage, and cancer mortality in high-income and middle-income countries, 1990-2010: a longitudinal analysis. *Lancet.* 2016;388(10045):684-95. [https://doi.org/10.1016/S0140-6736\(16\)00577-8](https://doi.org/10.1016/S0140-6736(16)00577-8)
4. Laurenti R, Jorge MHPM, Gotlieb SLD. A confiabilidade dos dados de mortalidade e morbidade por doenças crônicas não-transmissíveis. *Cienc Saude Coletiva.* 2004;9(4):909-20. <https://doi.org/10.1590/S1413-81232004000400012>
5. Naghavi M, Makela S, Foreman K, O'Brien J, Pourmalek F, Lozano R. Algorithms for enhancing public health utility of national causes-of-death data. *Popul Health Metr.* 2010;8:9. <https://doi.org/10.1186/1478-7954-8-9>
6. Szwarcwald CL, Morais-Neto OL, Frias PG, Souza Júnior PRB, Escalante JJC, Lima RB, et al. Busca ativa de óbitos e nascimentos no Nordeste e na Amazônia Legal: estimação das coberturas do SIM e do Sinasc nos municípios brasileiros. In: Ministério da Saúde (BR), Secretaria de Vigilância em Saúde, Departamento de Análise de Situação em Saúde. *Saúde Brasil 2010 - Uma análise da situação de saúde e de evidências selecionadas de impacto de ações de vigilância em saúde.* Brasília, DF; 2011. p.79-98. (Série G. Estatística e Informação em Saúde).
7. Lima EEC, Queiroz BL. Evolution of the deaths registry system in Brazil: associations with changes in the mortality profile, under-registration of death counts, and ill-defined cause of death. *Cad Saude Publica.* 2014;30(8):1721-30. <https://doi.org/10.1590/0102-311X00131113>
8. GBD 2016 Brazil Collaborators. Burden of disease in Brazil, 1990-2016: a systematic subnational analysis for the Global Burden of Disease Study 2016. *Lancet.* 2018;392(10149):760-75. [https://doi.org/10.1016/S0140-6736\(18\)31221-2](https://doi.org/10.1016/S0140-6736(18)31221-2)
9. França E, Teixeira R, Ishitani L, Duncan BB, Cortez-Escalante JJ, Morais Neto OL, et al. Ill-defined causes of death in Brazil: a redistribution method based on the investigation of such causes. *Rev Saude Publica.* 2014;48(4):671-81. <https://doi.org/10.1590/S0034-8910.2014048005146>
10. Bierrenbach AL, Alencar GP, Martinez C, Souza MFM, Policena GM, França EB. Redistribution of heart failure deaths using two methods: linkage of hospital records with death certificate data and multiple causes of death data. *Cad Saude Publica.* 2019;35(5):e00135617. <https://doi.org/10.1590/0102-311x00135617>
11. Silva GA, Gamarra CJ, Girianelli VR, Valente JG. Tendência da mortalidade por câncer nas capitais e interior do Brasil entre 1980 e 2006. *Rev Saude Publica.* 2011;45(6):1009-18. <https://doi.org/10.1590/S0034-89102011005000076>
12. Braga SFM, Souza MC, Cherchiglia ML. Time trends for prostate cancer mortality in Brazil and its geographic regions: an age-period-cohort analysis. *Cancer Epidemiol.* 2017;50 (Pt A):53-9. <https://doi.org/10.1016/j.canep.2017.07.016>
13. Malta DC, Abreu DMX, Moura L, Lana GC, Azevedo G, França E. Trends in corrected lung cancer mortality rates in Brazil and regions. *Rev Saude Publica.* 2016;50:33. <https://doi.org/10.1590/S1518-8787.2016050006209>
14. Lozano R, Naghavi M, Foreman K, Lim S, Shibuya K, Aboyans V, et al. Global and regional mortality from 235 causes of death for 20 age groups in 1990 and 2010: a systematic

- analysis for the Global Burden of Disease Study 2010. *Lancet*. 2012;380(9859):2095-128. [https://doi.org/10.1016/S0140-6736\(12\)61728-0](https://doi.org/10.1016/S0140-6736(12)61728-0)
15. Pan American Health Organization. Revisions of the International Classification of Diseases (ICD-9 and ICD-10): impact on health statistics. *Epidemiol Bull*. 1996;17(2):1-5.
 16. GBD 2017 Causes of Death Collaborators. Global, regional, and national age-sex-specific mortality for 282 causes of death in 195 countries and territories, 1980-2017: a systematic analysis for the Global Burden of Disease Study 2017. *Lancet*. 2018;392(10159):1736-88. [https://doi.org/10.1016/S0140-6736\(18\)32203-7](https://doi.org/10.1016/S0140-6736(18)32203-7)
 17. Ahern RM, Lozano R, Naghavi M, Foreman K, Gakidou E, Murray CJL. Improving the public health utility of global cardiovascular mortality data: the rise of ischemic heart disease. *Popul Health Metr*. 2011;9:8. <https://doi.org/10.1186/1478-7954-9-8>
 18. World Health Organization, Department of Health Statistics and Information Systems. WHO methods and data sources for global causes of death 2000-2011. Geneva (CH): WHO; 2013. (Global Health Estimates Technical Paper WHO/HIS/HSI/GHE/2013.3).
 19. Ahmad OB, Boschi-Pinto C, Lopez AD, Murray CJL, Lozano R, Inoue M. Age standardization of rates: a new WHO standard. Geneva (CH): WHO; 2001. (GPE Discussion Paper Series; N° 31).
 20. Antunes JLF, Waldman EA. Trends and spatial distribution of deaths of children aged 12-60 months in São Paulo, Brazil, 1980-98. *Bull World Health Organ*. 2002;80(5):391-8.
 21. Jorge MHPM, Laurenti R, Lima-Costa MF, Gotlieb SLD, Chiavegatto Filho ADP. A mortalidade de idosos no Brasil: a questão das causas mal definidas. *Epidemiol Serv Saude*. 2008;17(4):271-81. <https://doi.org/10.5123/S1679-49742008000400004>
 22. Mikkelsen L, Phillips DE, AbouZahr C, Setel PW, Savigny D, Lozano R, et al. A global assessment of civil registration and vital statistics systems: monitoring data quality and progress. *Lancet*. 2015;386(10001):1395-406. [https://doi.org/10.1016/S0140-6736\(15\)60171-4](https://doi.org/10.1016/S0140-6736(15)60171-4)
 23. Szwarcwald CL. Strategies for improving the monitoring of vital events in Brazil. *Int J Epidemiol*. 2008;37(4):738-44. <https://doi.org/10.1093/ije/dyn130>
 24. Murray CJL, Lopez AD, World Health Organization, World Bank, Harvard School of Public Health. The global burden of disease: a comprehensive assessment of mortality and disability from diseases, injuries, and risk factors in 1990 and projected to 2020: summary. Boston, MA: Harvard School of Public Health; 1996.
 25. Phillips DE, Lozano R, Naghavi M, Atkinson C, Gonzalez-Medina D, Mikkelsen L, et al. A composite metric for assessing data on mortality and causes of death: the vital statistics performance index. *Popul Health Metr*. 2014;12:14. <https://doi.org/10.1186/1478-7954-12-14>
 26. The University of Melbourne. Improving cause of death information. Guidance for assessing and interpreting the quality of mortality data using ANACONDA. Resources and Tools. Melbourne (AU): Bloomberg Philanthropies; 2017. (CRVS Technical Guides).
 27. Miki J, Rampatige R, Richards N, Adair T, Cortez-Escalante J, Vargas-Herrera J. Saving lives through certifying deaths: assessing the impact of two interventions to improve cause of death data in Perú. *BMC Public Health*. 2018;18(1):1329. <https://doi.org/10.1186/s12889-018-6264-1>
 28. Ishitani LH, Cunha CC, Ladeira RM, Corrêa PRL, Santos MR, Rego MAS, et al. Evaluation of a smartphone application to improve medical certification of the cause of death. *Rev Bras Epidemiol*. 2019;22 Supl 3:E190014. <https://doi.org/10.1590/1980-5497201900014.supl.3>
 29. França EB. Códigos garbage declarados como causas de morte nas estatísticas de saúde [editorial]. *Rev Bras Epidemiol*. 2019;22 Supl 3:E190001. <https://doi.org/10.1590/1980-549720190001.supl.3>
 30. Setel PW, Macfarlane SB, Szreter S, Mikkelsen L, Jha P, Stout S, et al. A scandal of invisibility: making everyone count by counting everyone. *Lancet*. 2007;370(9598):1569-77. [https://doi.org/10.1016/S0140-6736\(07\)61307-5](https://doi.org/10.1016/S0140-6736(07)61307-5)

Funding: São Paulo Research Foundation (Fapesp - Grant 2019/08017-6).

Authors' Contribution: Study design and planning: AB, JLFA. Data collection, analysis and interpretation: AB, ARC, JLFA. Manuscript drafting or review: AB, ARC, JLFA. Approval of the final version: AB, ARC, JLFA. Public responsibility for the content of the article: AB.

Conflict of Interests: The authors declare no conflict of interest.

RSPRevista de
Saúde Pública<http://www.rsp.fsp.usp.br/>

Errata

In the article “**Redistributing deaths by ill-defined and unspecified causes on cancer mortality in Brazil**”, DOI <https://doi.org/10.11606/s1518-8787.2021055003319>, published on the Revista de Saúde Pública. 2021;55:106, on page 1, where it reads:

DESCRIPTORS: Chemical Waste. Hazardous Waste. Product Labeling. Substances, Products and Materials Transportation.

It should read as follows:

DESCRIPTORS: Neoplasms, mortality. Data Accuracy. Vital Statistics. Cause of Death.

Copyright: This is an open-access article distributed under the terms of the Creative Commons Attribution License, which permits unrestricted use, distribution, and reproduction in any medium, provided that the original author and source are credited.

